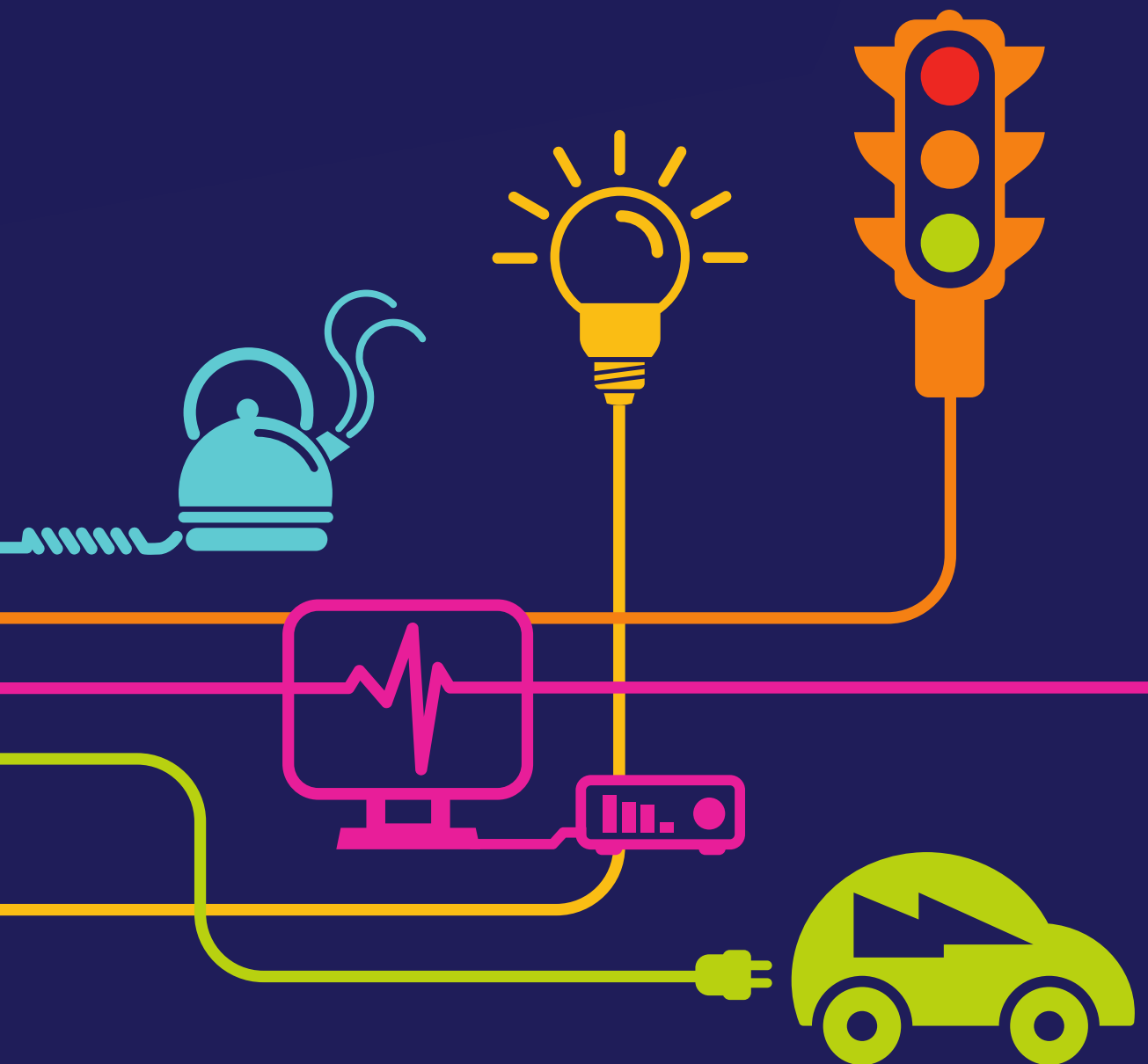


# DOCUMENT 5.13.1.8

## Highway Link References Chapter 13 – Figure 8

National Grid (North Wales Connection Project)

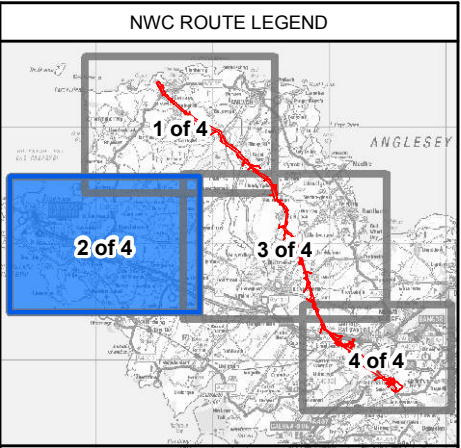
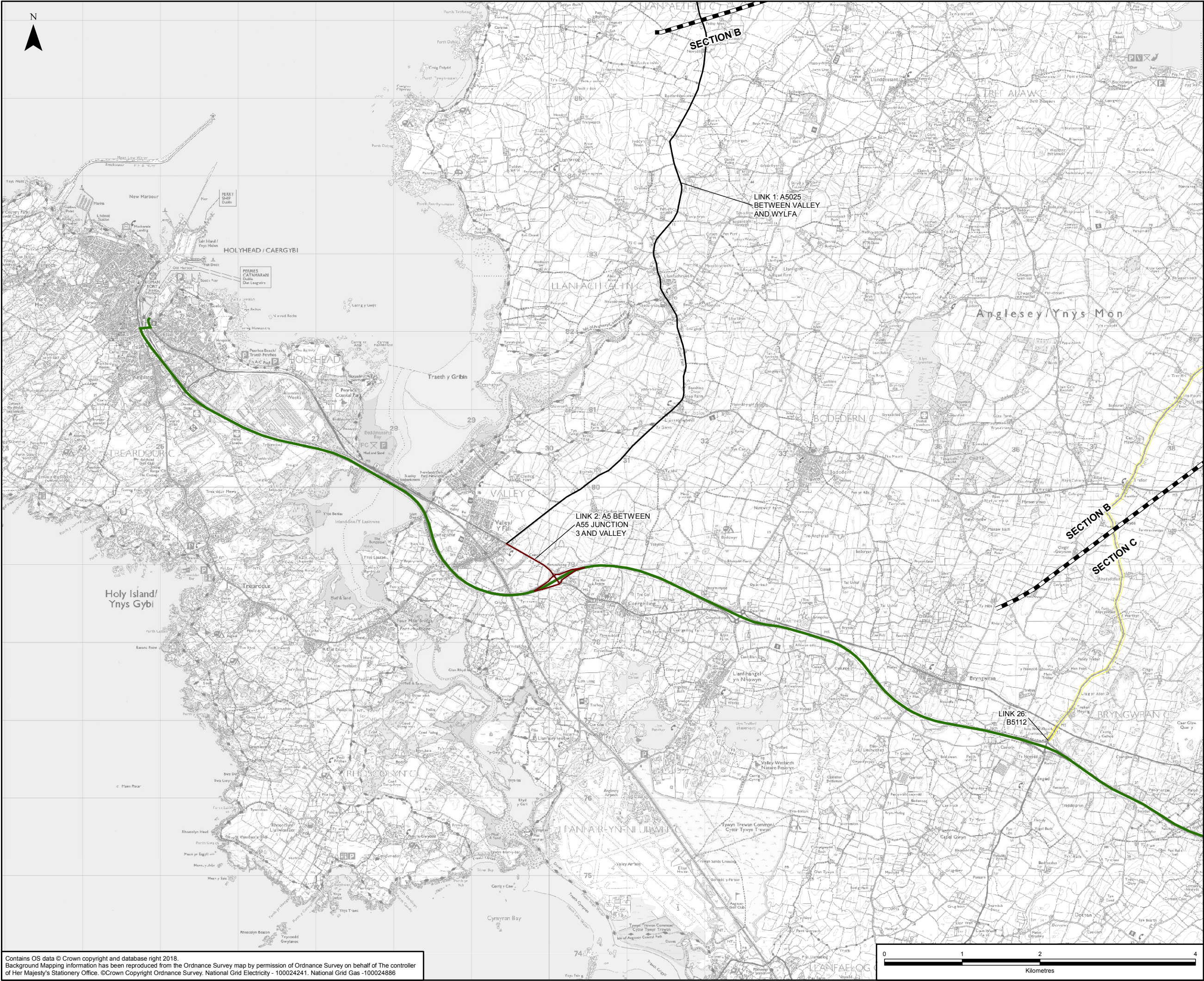
*Regulation 5(2)(a) including (l) and (m) of the Infrastructure Planning  
(Applications: Prescribed Forms and Procedure) Regulations 2009*











**LEGEND**

- ORDER LIMITS
- SECTION CUTLINES
- LIGHT GOODS VEHICLE (LGV) / HEAVY GOODS VEHICLE (HGV) ROAD LINK
- LINK 1
- LINK 2
- LINK 3
- LINK 4
- LINK 4.1
- LINK 5
- LINK 6
- LINK 7
- LINK 7.1
- LINK 8
- LINK 8.1
- LINK 8.2
- LINK 9
- LINK 11
- LINK 11.1
- LINK 12
- LINK 13
- LINK 14
- LINK 15
- LINK 15.1
- LINK 16
- LINK 17
- LINK 18
- LINK 18.1
- LINK 19
- LINK 20
- LINK 21
- LINK 22
- LINK 23
- LINK 24
- LINK 25
- LINK 26
- LINK 27
- LINK 28
- LINK 29
- LINK 30
- LINK 31
- LINK 32
- LINK 33
- LINK 34
- LINK 35
- LINK 36
- LINK 36.1
- TRUNK ROAD NETWORK

**NOTES**

1: LIGHT GOODS VEHICLE (LGV) 3.5T OR BELOW  
HEAVY GOODS VEHICLE (HGV) ABOVE 3.5T

A	20/07/2018	ENVIRONMENTAL STATEMENT	JB	EH	AL
Rev	Date	Description	GIS	Chk	App

**nationalgrid**

Scheme: NORTH WALES CONNECTION PROJECT

Document Number: 5.13.1.8

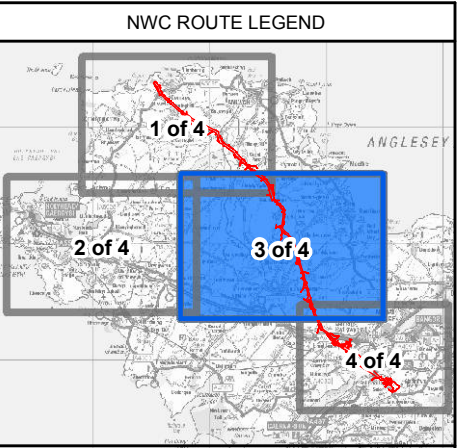
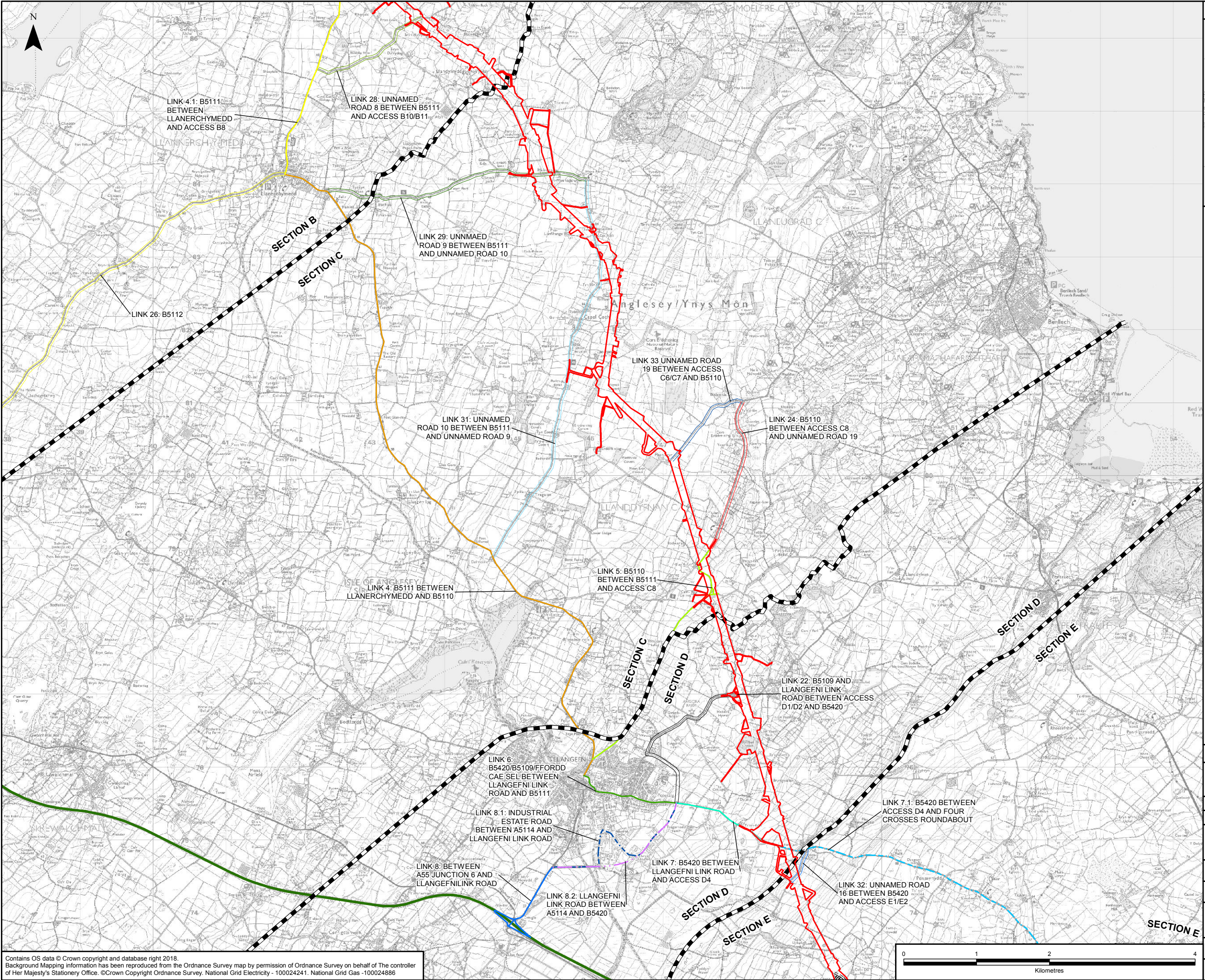
Document Title: FIGURE 13.8  
HIGHWAY LINK REFERENCES  
SECTION B & C

Creator:	Date:	Checker:	Date:	Approver:	Date:
JB	20/07/2018	EH	20/07/2018	AL	20/07/2018

Document Type:	Scale:	Format:	Sheets:	Rev:
FIGURE	1:45,000	A3	2 of 4	A

Contains OS data © Crown copyright and database right 2018.  
Background Mapping information has been reproduced from the Ordnance Survey map by permission of Ordnance Survey on behalf of The controller of Her Majesty's Stationery Office. ©Crown Copyright Ordnance Survey, National Grid Electricity - 100024241, National Grid Gas - 100024886



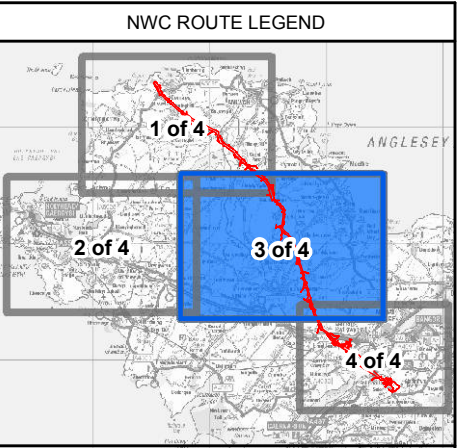
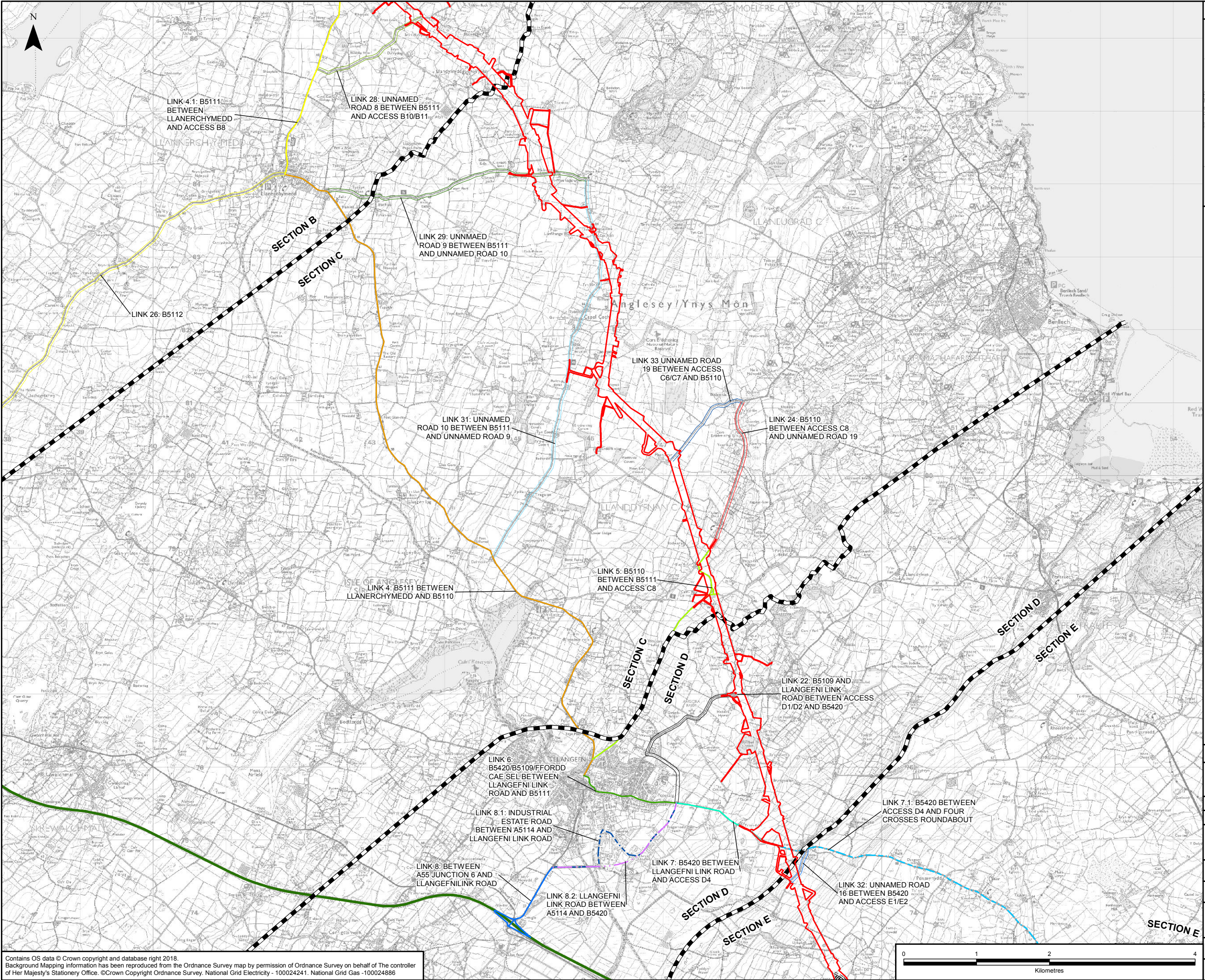


LEGEND	
	ORDER LIMITS - OPTION A
	SECTION CUTLINES
LIGHT GOODS VEHICLE (LGV) / HEAVY GOODS VEHICLE (HGV) ROAD LINK	
	LINK 1
	LINK 2
	LINK 3
	LINK 4
	LINK 4.1
	LINK 5
	LINK 6
	LINK 7
	LINK 7.1
	LINK 8
	LINK 8.1
	LINK 8.2
	LINK 9
	LINK 11
	LINK 11.1
	LINK 12
	LINK 13
	LINK 14
	LINK 15
	LINK 15.1
	LINK 16
	LINK 17
	LINK 18
	LINK 18.1
	LINK 19
	LINK 20
	LINK 21
	LINK 22
	LINK 23
	LINK 24
	LINK 25
	LINK 26
	LINK 27
	LINK 28
	LINK 29
	LINK 30
	LINK 31
	LINK 32
	LINK 33
	LINK 34
	LINK 35
	LINK 36
	LINK 36.1
	TRUNK ROAD NETWORK

NOTES				
1: LIGHT GOODS VEHICLE (LGV) 3.5T OR BELOW HEAVY GOODS VEHICLE (HGV) ABOVE 3.5T				
A	20/07/2018	ENVIRONMENTAL STATEMENT	JB	EH
Rev	Date	Description	GIS	Chk
nationalgrid				
Scheme: NORTH WALES CONNECTION PROJECT				
Document Number: 5.13.1.8				
Document Title: FIGURE 13.8 HIGHWAY LINK REFERENCES SECTION B, C, D OPTION A				
Creator:	Date:	Checker:	Date:	Approver:
JB	20/07/2018	EH	20/07/2018	AL
Document Type:	Scale:	Format:	Sheets:	Rev:
FIGURE	1:48,000	A3	3 of 4 Option A	A

Contains OS data © Crown copyright and database right 2018.  
Background Mapping information has been reproduced from the Ordnance Survey map by permission of Ordnance Survey on behalf of The controller of Her Majesty's Stationery Office. © Crown Copyright Ordnance Survey, National Grid Electricity - 100024241, National Grid Gas - 100024886





**LEGEND**

- ORDER LIMITS - OPTION B
- SECTION CUTLINES
- LIGHT GOODS VEHICLE (LGV) / HEAVY GOODS VEHICLE (HGV) ROAD LINK
- LINK 1
- LINK 2
- LINK 3
- LINK 4
- LINK 4.1
- LINK 5
- LINK 6
- LINK 7
- LINK 7.1
- LINK 8
- LINK 8.1
- LINK 8.2
- LINK 9
- LINK 11
- LINK 11.1
- LINK 12
- LINK 13
- LINK 14
- LINK 15
- LINK 15.1
- LINK 16
- LINK 17
- LINK 18
- LINK 18.1
- LINK 19
- LINK 20
- LINK 21
- LINK 22
- LINK 23
- LINK 24
- LINK 25
- LINK 26
- LINK 27
- LINK 28
- LINK 29
- LINK 30
- LINK 31
- LINK 32
- LINK 33
- LINK 34
- LINK 35
- LINK 36
- LINK 36.1
- TRUNK ROAD NETWORK

**NOTES**

1: LIGHT GOODS VEHICLE (LGV) 3.5T OR BELOW  
HEAVY GOODS VEHICLE (HGV) ABOVE 3.5T

A	20/07/2018	ENVIRONMENTAL STATEMENT	JB	EH	AL
Rev	Date	Description	GIS	Chk	App

**nationalgrid**

Scheme: NORTH WALES CONNECTION PROJECT

Document Number: 5.13.1.8

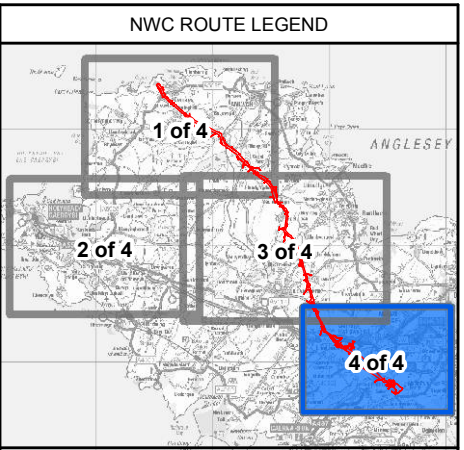
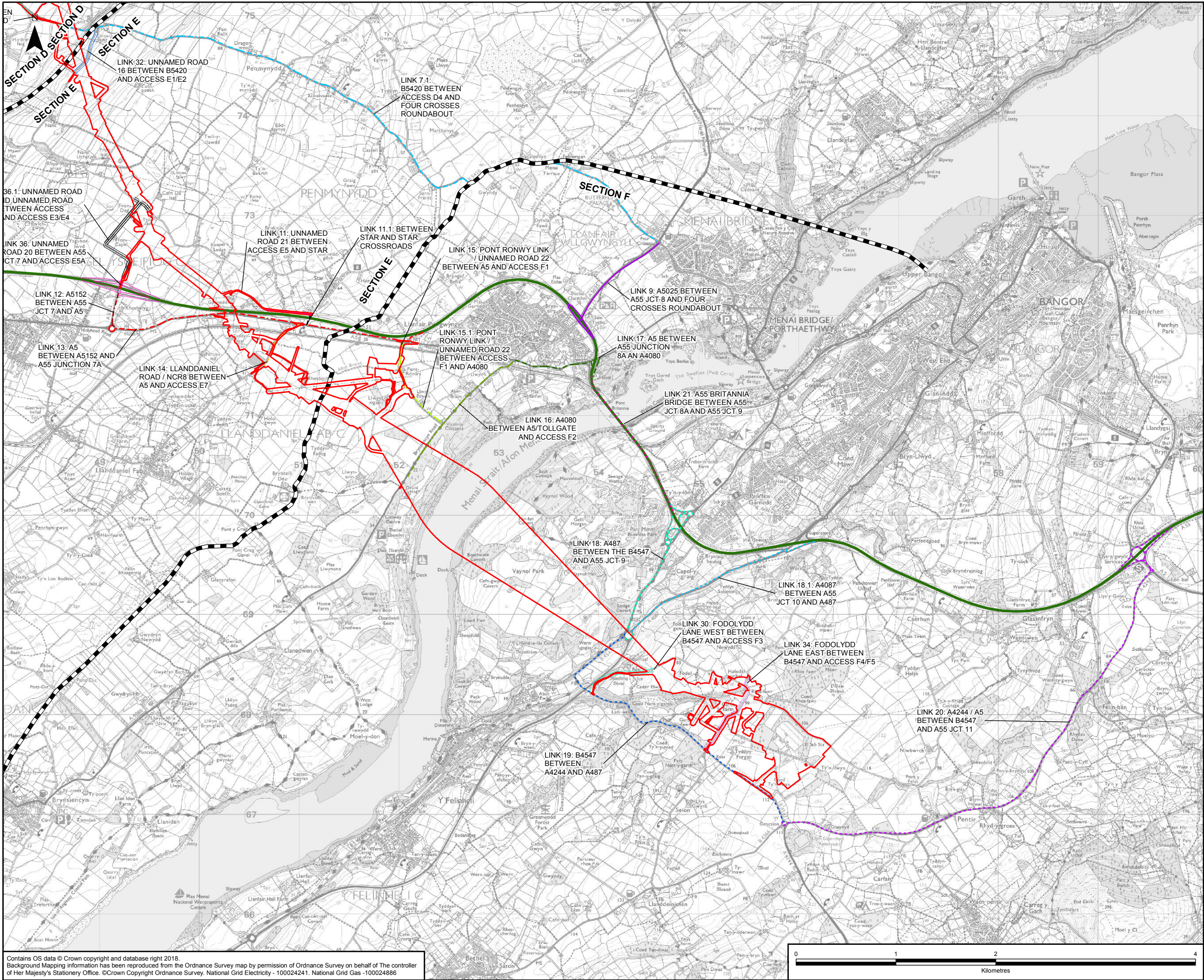
Document Title: FIGURE 13.8  
HIGHWAY LINK REFERENCES  
SECTION B, C, D OPTION B

Creator:	Date:	Checker:	Date:	Approver:	Date:
JB	20/07/2018	EH	20/07/2018	AL	20/07/2018


Document Type:	Scale:	Format:	Sheets:	Rev:
FIGURE	1:48,000	A3	3 of 4 Option B	A

Contains OS data © Crown copyright and database right 2018.  
Background Mapping information has been reproduced from the Ordnance Survey map by permission of Ordnance Survey on behalf of The controller of Her Majesty's Stationery Office. © Crown Copyright Ordnance Survey, National Grid Electricity - 100024241, National Grid Gas - 100024886





LEGEND	
	ORDER LIMITS
	SECTION CUTLINES
LIGHT GOODS VEHICLE (LGV) / HEAVY GOODS VEHICLE (HGV) ROAD LINK	
	LINK 1
	LINK 2
	LINK 3
	LINK 4
	LINK 4.1
	LINK 5
	LINK 6
	LINK 7
	LINK 7.1
	LINK 8
	LINK 8.1
	LINK 8.2
	LINK 9
	LINK 11
	LINK 11.1
	LINK 12
	LINK 13
	LINK 14
	LINK 15
	LINK 15.1
	LINK 16
	LINK 17
	LINK 18
	LINK 18.1
	LINK 19
	LINK 20
	LINK 21
	LINK 22
	LINK 23
	LINK 24
	LINK 25
	LINK 26
	LINK 27
	LINK 28
	LINK 29
	LINK 30
	LINK 31
	LINK 32
	LINK 33
	LINK 34
	LINK 35
	LINK 36
	LINK 36.1
	TRUNK ROAD NETWORK

NOTES					
1: LIGHT GOODS VEHICLE (LGV) 3.5T OR BELOW HEAVY GOODS VEHICLE (HGV) ABOVE 3.5T					
A	20/07/2018	ENVIRONMENTAL STATEMENT	JB	EH	AL
Rev	Date	Description	GIS	Chk	App
					
Scheme: NORTH WALES CONNECTION PROJECT					
Document Number:		5.13.1.8			
Document Title:		FIGURE 13.8 HIGHWAY LINK REFERENCES SECTION E, F			
Creator: JB	Date: 20/07/2018	Checker: EH	Date: 20/07/2018	Approver: AL	Date: 20/07/2018
Document Type: FIGURE	Scale: 1:35,000	Format: A3	Sheets: 4 of 4	Rev: A	

Contains OS data © Crown copyright and database right 2018.  
Background Mapping information has been reproduced from the Ordnance Survey map by permission of Ordnance Survey on behalf of The controller of Her Majesty's Stationery Office. ©Crown Copyright Ordnance Survey, National Grid Electricity - 100024241, National Grid Gas - 100024886

Document Path: F:\Proposal\3512North Wales Connection - NG\GIS\02 Maps\Traffic & Transport\ES\_Figs\_DCO 2018\TRAF\_13-8\_ROADLINKREFS\_PlanSeries\_JB\_20180720.mxd